



# Boarder Handbook

Waitaki Boys' High School : Don House

# Welcome

Kia Ora and a warm welcome to the Don House Handbook.

Don House is the boarding establishment of Waitaki Boys' High School, located in the coastal township of Oamaru, with a proud tradition of moulding boys into fine young men of outstanding character. Don House boarders are confidently able to contribute positively to their school, families and communities and leave as well rounded, educated young men.

Staff are dedicated, experienced, and holistically focused on all of it's boarders, ensuring they have a safe and enjoyable experience and feel a strong sense of belonging in Don House. Every boy is seen as an integral part of the Hostel's whanau.

Don House facilities include four dormitories and a large communal common room. The staff offices are attached to the common room allowing great supervision and creating an energetic family atmosphere. Staff housing is all within proximity and staff are actively involved each day. A unique aspect of the dormitories is that all Boarders from Year 10 to Year 13 have individual rooms. The Year 12 and 13 boarders have their own kitchen and lounge area that helps with the transition from hostel life to being a young adult.

Recreational facilities include; swimming and diving pool, full sized gym, weights room, tennis courts, turfed area, soccer, rugby and cricket fields, cricket nets and trapshooting range. Don House Boarders are encouraged to take advantage of every opportunity with access to a wide range of off-site activities that they can be transported to each day.

The Hostel is fortunate to have a diverse team of staff from a variety of cultural and professional backgrounds who are passionate about supporting Boarders to reach their full potential. Each member of the team utilises their own skill set when fulfilling their role. They are open minded and can be flexible in their approach whilst continuing to uphold the values and boundaries that are important to Don House.

As well as encouraging Boarders to do well both academically and within extracurricular activities, staff also focus on assisting them to develop emotionally, socially and spiritually, with the aim of teaching independence and resilience. This prepare our young men for the world they will be entering.





## Don House: A Brief History.

### A Great National Boarding School

Waitaki Boys' High School's legendary Rector, Mr Frank Milner (1906-44), held a dream of developing a Boarding School on a national scale in Oamaru. Through his inspirational leadership of Waitaki Boys he created a school that became renown throughout the English-speaking world. A check of Waitaki's roll in 1909 tells the story of a dramatic roll increase, with 204 boys of which 145 were boarding students. During Mr Milner's final year at Waitaki, the boarding roll stood at 212-the highest in over 20 years.



### The Crest

Don House is named after Dr Don, Rector from 1897 to 1905, shown as second Rector by the two green 'bars'. The theme records the 'gospel of hard work' so favoured by Dr Don. The Aladdin's lamp represents the light of knowledge & the crossed quills show the quest of learning.



### Don House Mission Statement

We endeavour to create a wholesome family environment. We teach, model, and encourage all Boarders to follow and demonstrate the Don House values.

We challenge Boarders to set goals and teach them about the tools needed to achieve their aspirations. Don House is a small hostel that prides itself on the giant care and pastoral support it provides. Staff get to know Boarders each individual on a personal level and assist them to set high standards for personal growth.



# The Principles of Don House.

## PURPOSE

An individual and collective purpose to be better each day

A consistent effort, enriching our journey towards our individual and collective goals.

## PERSISTENCE

## INTEGRITY

A quality demonstrated by Don House boarders to do the right thing at the right time, even when no one is looking.

Don House staff and boarders have a consistent journey towards self-discovery and self-improvement.

## GROWTH

### DON HOUSE MOTTO:

*Diligent et labore - Labour with diligence*



# Hostel Life.

## Inspections

Each weekday morning and Sunday evening room and dormitory inspections are held. Boarders are to be ready for the day and have their room and dorm at an acceptable standard.



## Integrity

Don House boarders pride themselves in being honest and truthful in their actions. A young man with integrity can do the right thing, at the right moment, when no one is watching. Don House staff engage and promote the notion of integrity and as part of our daily routine.



## Prep: Labour with Diligence

Supervised study time gives boarders the opportunity to complete homework and assignments. Junior boarders are set a variety of tasks by us to complete if they do not have any homework from their classes. Prep enables boarders to work together to achieve their academic goals and we often have WBHS teachers join us which offers great support and academic growth. A computer suite is available, and boys are welcome to use their personal devices. Boarders are encouraged to seek new learning opportunities and demonstrate personal growth in an area of their choosing. This is to be confirmed by duty staff prior to beginning.



## House Meetings: Persistent

Every second Monday we meet as a house and discuss aspects of the hostel and boarder's day's that need to be presented to all. These meetings give the boarders the opportunity to discuss everything Don House in a safe and encouraging environment. We often have clips of motivational speakers and role models that the boarders can learn and apply in their day.



## Leadership

Leadership is seen as the ability to motivate a group of people towards a common goal. Leadership takes many forms in Don House and each day we actively discuss and demonstrate leadership. Don House leaders uphold the values and encourage others to demonstrate and uphold the Don House values in all endeavours. Leadership roles include: Don House Head Prefect, Don House Prefects, Don House Dorm Monitors.



# A Typical Don House Day.

6.45am	Morning Duty	Morning duty staff arrive and prepare the day ahead. This will include any morning activities the boys have selected (run, swim, etc)
7.30am	Wake Up	Wake up. Duty staff and/or dorm monitors will wake you for the day, if you did not participate in morning activities.
7.45am	Breakfast	Breakfast at the Dining Room with the option of cereals, brown or white bread/toast, a selection of spreads & fruit. Drinks include water, milk, and hot chocolate.
8.15am	Return to Dorm	You will have time to shower, brush your teeth, check your school bag & get ready for your day.
8.40am	Room / Uniform Inspection	Your dorm monitor will inspect your room to ensure it is tidy and kept to a high standard and ensure that your uniform is clean, tidy and worn correctly.
8.45am	Device Issued	We are a Bring Your Own Device School. You'll be given your device for schoolwork. Phones stay in the locked box till after school. Yrs 11-13 self-manage this.
8.50am	Dorms Locked	You will begin to make your way over to school.
8.55am	First School Bell	Your school day runs from 9am – 3.05pm. You are not allowed to return to Don House/hostel area during your school day unless you have an appointment.
3.05pm	End of School	Afternoon Tea in the Dining Hall. Change out of your uniform. Co-Curricular commitments take priority, but can include attending training sessions.
5.15pm	Dinner	Dining Hall from 5.15pm. Karakia, then each year group will go up to the servery to collect their dinner.
6.15pm	Prep	Prep runs for an hour Tuesday – Thursday. You are expected to complete homework, revision tasks, reading to support your learning/school subjects.
7.30pm	Evening Activities	Activities . Team Leaders & House Masters will arrange a variety of activities including sports games.
8.45pm	Register Devices	Year 9's & 10's must hand in all phones & devices to be stored overnight. Phones will be kept in a locked box & devices in a locked charging unit.
9.00pm	Roll	From 9.00pm Staff will complete roll calls for each dorm; 9.00pm – Year 9, 9.15pm – Year 10, 9.30pm – Year 11, 9.45pm – Year 12 & 10.00pm – Year 13.
10.15pm	Last Check	Duty staff will ensure all boys are settled in their rooms and complete safety checks prior to checking security cameras are on.



## What you need to know:

### Boarders Rooms

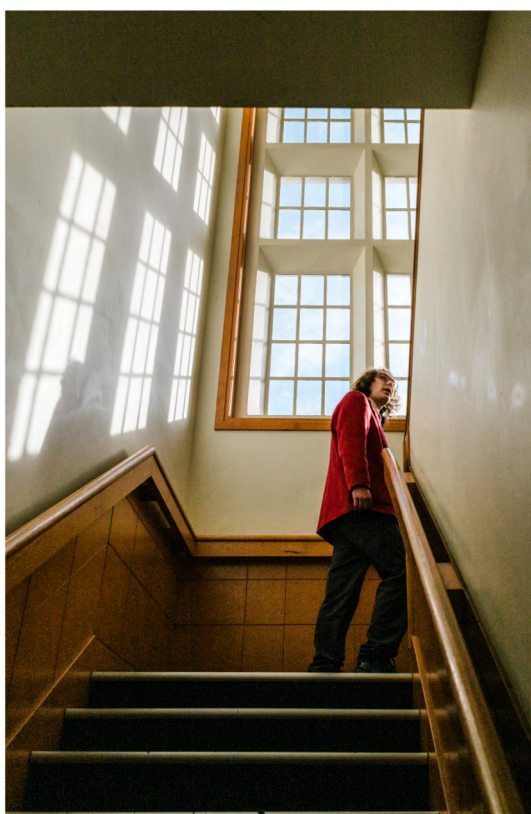
Each Don House boarder has his own room and is encouraged to make his room feel and look homely. We have strict inspections at 8.40AM each day and our boarders are expected to present their room with pride each morning. Each room has a heater, storage cupboards, wardrobes and lots of natural lighting.



### Personal Devices

Waitaki Boys High School is a BYOD school and encourages students to bring their own learning device. Cell phones are not permitted at school. As a hostel Don House encourages boarders to have their own learning devices and cell phones so that they can maintain contact and continue their learning outside of the normal school hours. Don House has its own Wi-Fi access that is monitored through the Waitaki Boys High School tech team.

Don House Junior Boarders register their devices each night at 8 45pm. They are locked away for the evening so to encourage good rest and social interaction. Phones are then returned to boarders after morning room inspections. Senior boarders can their keep devices and are trusted to make good decisions around their sleep habits and academic progress.



### Uniform and Clothing

It is very important that all clothing, bathroom linen and bedding is clearly named. Formal uniforms must be worn when representing the school and Don House in sport or formal occasions. School uniforms must be always worn correctly. Socks pulled up, shirts buttoned up and tucked in, with polished shoes. All clothing must be clearly named.

### Personal Property

All boarders have a lockable cupboard in which they can safely store valuables. The responsibility for the storage and security rests with the boarder.

### Laundry

Don House boarders are provided a laundry service. Boarders self-manage this and can drop off their laundry at breakfast time. Each afternoon the boarders have supervised access to the laundry, and can collect their belongings which have been washed, dried, folded and placed in their personal space.



## What you need to know:

### Transport

All boarders have access to a wide range of off-site activities. We can provide transport in the hostel van. Boarders can put their names up on the board and notify staff well in advance of the activity. Personal transport can be locked away in the bike lock up located within the hostel buildings. All boarders who bring personal transport must bring appropriate safety equipment e.g.; bike helmet's etc. (Hostel Van trips are generally on charged).

Having a car or motorbike at Don House is a privilege reserved for Year 12 and 13 Boarders. Boarders must fill out a vehicle form for both school and hostel which allows them to have a vehicle on school property. Failure to do adhere to school and hostel rules may result in losing this privilege.

### Leave

All leave is a privilege not a right and all Don House boarders are taught to respect this privilege and the self and time management that is required to ensure all leave is safe and within the Don House values and boundaries. All casual leave is to be requested and then recorded in the appropriate place. All over night/weekend leave must be in by 12PM on the Thursday prior to the upcoming weekend.

### Weekends

Don House boarder weekends are filled with activities. We are extensively involved in the school co-curricular programme. Alongside this we provide opportunities for our boarders to experience the resources of Oamaru and our school. From mountain biking to fishing our boarders are encouraged to engage in a variety of experiences.

### International Boarders

Don House has a vibrant international community. Currently we have boarders from the Pacific and throughout Asia. International boarders become fully immersed in the Don House and kiwi culture. From working on the farm, learning the English language through engaging with staff and boarders and becoming involved in team sports. Having international boarders also benefits our domestic boarders. It gives them the opportunity to learn about a new culture, embrace differences and find similarities.





## What you need to know:

### Boarding Bursaries and Scholarships

Bursaries and scholarships are available for applicants looking for financial assistance with boarding fees. Scholarships that can be applied for include:

- Sports Council Scholarships
- Rugby Scholarships
- Basketball Scholarships
- Cricket Scholarships
- Fraser Farm Scholarship

For more information, please contact the school office or visit [www.waitakibhs.school.nz/enrolments/scholarships](http://www.waitakibhs.school.nz/enrolments/scholarships)

### Don House Communication

Communication between staff, boarders and parents is essential. Staff and caregivers are working in a partnership that ensures all boarders are safe and where they need to be at all times. Please use the following email and phone number to communicate with Don House:

Email: [admin@waitakibhs.school.nz](mailto:admin@waitakibhs.school.nz)  
Phone: 03-437-0529





# Programmes and Activities

Don House staff and boarders engage in a wide range of programmes that help holistically develop our boarders.

These programmes include:

- Don House Shield Competition
- Dorm Monitoring that develops personal and group responsibility
- Year 9 recreation that develops teamwork and brotherhood
- Prep programme that encourages academic progress and life skills
- House meetings
- Community work and volunteering
- "Better than we found it" programme where we work together to improve our hostel.
- Year 13 Life skills programme

Don House staff provide a wide range of activities for our boarders that provide fun and exciting experiences for the boarders.

These activities are chosen by the boarders and include:

- WBHS Co-curricular programme
- Fishing
- Skiing
- Kiwi Water park
- Highlander Rugby Games
- Paintball Shooting
- Don House Lakes Day
- Day Tramps
- Beach activities
- Golfing
- Swimming Pools
- Ten Pin Bowling
- Movies





## What our Boarders have to say:

**"I like Don House because of all of the opportunities it gives you while in High School".** *Year 9 boarder*

"Don House is one big family, we are all brothers. All the boys & staff have been very supportive through my years in Don House".  
*Year 11 boarder*

"I've made friends for life from being in Don House. We get to meet people from all different backgrounds & hostel life helps prepare you for halls at Uni or flatting".  
*Year 13 boarder*

"Being in Don House is handy for sports, you learn good time management & how to get on with other people".  
*Year 11 boarder*

"I think that Don House hostel is like a home away from home to me, it's taught me to be more considerate to others and has given me real world experience about how to treat people from different cultures and households. The staff at Don House are kind and caring and are always there if you need a chat".





Waitaki Boys' High School : Don House